

# Project Update

## Gerber Creek Phase 3 DRAINAGE IMPROVEMENT PROJECT

JANUARY 2018

ISSUE 1

### About this Newsletter

This newsletter provides current information about the Gerber Creek Phase 3 Drainage Improvement Project (Project). For your reference, a project exhibit is printed on the back of this newsletter. If you have questions, please contact the project staff listed below.

### Background

The proposed Project is located south of Gerber Road between the CCTC Railroad to the west, and Bradshaw Road to the east. The Project will implement a portion of the drainage master plan for this developing area of Sacramento County.

The Project will improve drainage and flood protection to existing structures and future development. An open space wetland and wildlife habitat preserve corridor will be constructed in a future phase. Similar improvements to Elder and Gerber Creek were constructed downstream of the Project in the summers of 2016 and 2017.

### Project Description

The existing creek will be widened, deepened, and sections of the alignment shifted along property lines. Subsequently an existing portion of creek will be abandoned and backfilled. See the attached exhibit for details.

Upon completion of channel improvements, areas disturbed by the project will be stabilized for the wet season. Tree planting activities are scheduled to take place after 2020.

### Project Updates

The design is being finalized and the project is scheduled for construction in summer 2018. The project is currently undergoing design and is scheduled to be presented to the Sacramento County Board of Supervisors for advertise in February/March 2018.

A second newsletter will be mailed out to provide an update after public bidding. The newsletter will provide additional contact information for the construction phase of the project.

### Project Schedule

- Final Plans & Specifications – February 2018
- Board of Supervisors Approval – February/March 2018
- Project Advertisement – February/March 2018
- Bid Opening – April 2018
- Construction Begins – June 2018
- Construction Ends – November 2018
- Tree Planting Project – Fall 2020

All dates are tentative and subject to change

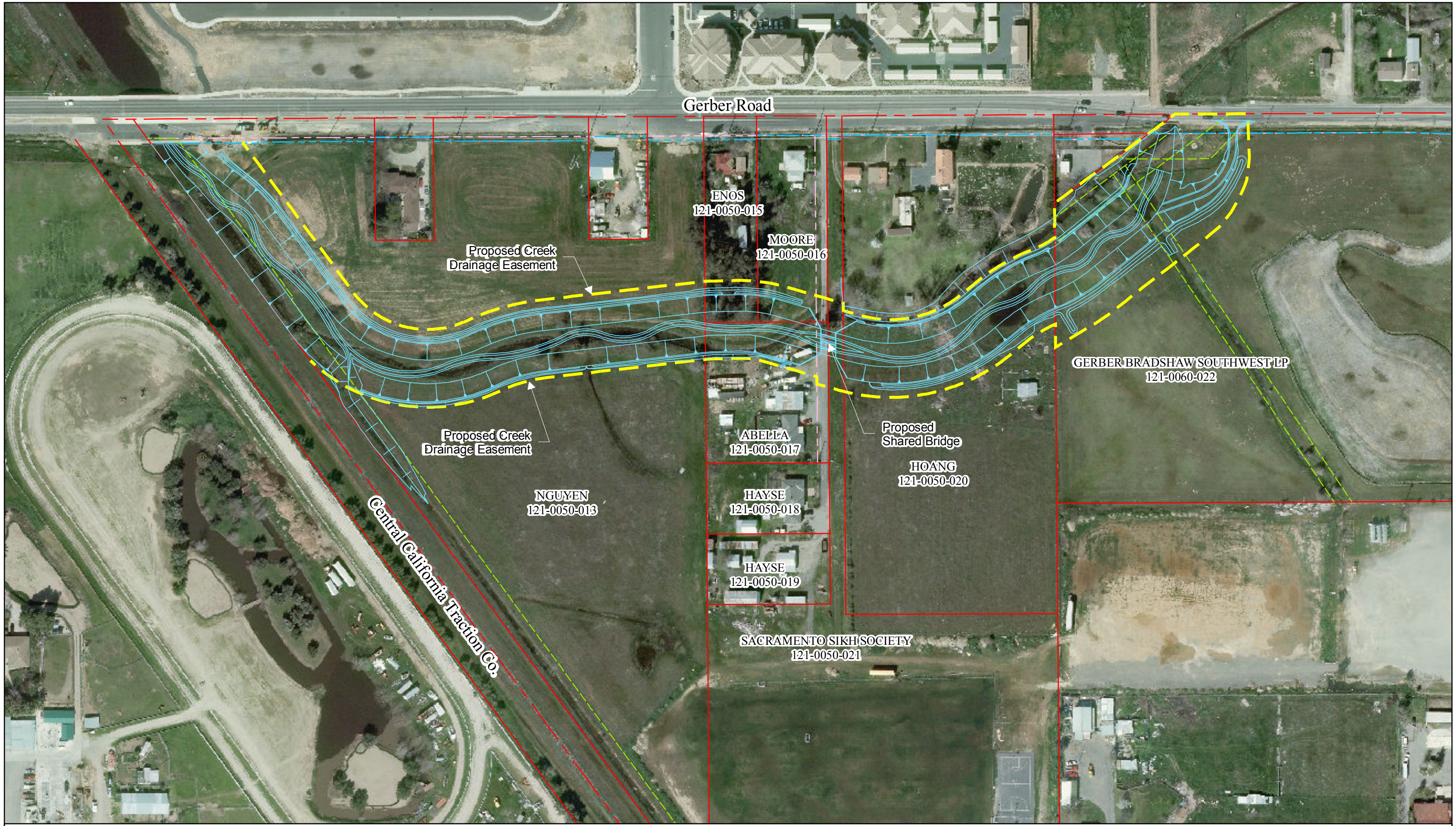
In addition, project information can be viewed online at [www.saccodwr.org](http://www.saccodwr.org): (search: Gerber Creek Phase 3 Project).





### For More Information, Please contact:

**Michael Meaney**  
Project/Design Engineer, (916) 874-1321  
E-mail: [meaneym@saccounty.net](mailto:meaneym@saccounty.net)



**Rohit Vasishta**  
Assistant Engineer, (916) 874-8393  
E-mail: [vasishtar@saccounty.net](mailto:vasishtar@saccounty.net)

Document Path: P:\Shared Folders\Drain Design\PROJECTS\Gerber Creek Phase 3\Drawings\06 - C\IS\Board Exhibits\Advertise\ATT 2-Exh A - Proposed Creek Alignment.mxd



-  Surveied Drainage Easement
-  Surveied Property Line
-  Surveied Road ROW
-  Surveied Access Easement

# Exhibit A - Gerber Creek Phase 3 Alignment

-  Proposed Creek
-  Drainage Easement



1 inch = 150 feet