

Project Update

Gerber Creek Phase 3 DRAINAGE IMPROVEMENT PROJECT

MAY 2018

ISSUE 2

About this Newsletter

This newsletter provides current information about the Gerber Creek Phase 3 Drainage Improvement Project (Project). For your reference, a project exhibit is printed on the back of this newsletter. If you have questions, please contact the project staff listed below.

Background

The proposed Project is located south of Gerber Road between the CCTC Railroad to the west, and Bradshaw Road to the east. The Project will implement a portion of a drainage master plan for several planning areas developing in this part of Sacramento County.

The Project will improve drainage and flood protection to existing and future developments. Similar improvements to Elder and Gerber Creek were constructed downstream of the Project in the summers of 2016 and 2017. An open space preserve, including wetland and wildlife habitat, will be constructed within the creek corridor in a future construction phase.

Project Description

The existing creek will be widened, deepened, and partially shifted. A portion of the existing creek will be abandoned and backfilled. An existing private bridge serving properties south of the creek will be reconstructed.

Upon completion of channel improvements, areas disturbed by the project will be stabilized with native grasses. The wetland and wildlife habitat is expected to be installed after 2020.

Project Updates

The storm drain improvement project was approved by the Board of Supervisors and advertised for construction contractors on February 27, 2018. The

public bid opening was on April 5, 2018. There were 11 bids submitted. On April 18, 2018 the contract was awarded to the lowest responsive, responsible bidder – Suulutaaq, Inc.

Quality Control

Courtney Wells is the construction inspector for the project. He will resolve most field issues and ensure the work meets the design specifications. Quinn Hofmann is the Resident Engineer. He will oversee construction and handle major field issues.

Project Schedule

- Construction Begins – June 2018
- Construction Ends – September 2018
- Tree Planting Project – Fall 2020/2021

All dates are tentative and subject to change

In addition, project information can be viewed online at www.saccodwr.org: (search: Gerber Creek Phase 3 Project).

For More Information, Please Contact:

Courtney Wells

Construction Inspector, (916) 215-3741
E-mail: wellsco@saccounty.net

Quinn Hofmann

Resident Engineer, (916) 875-6068
E-mail: hofmannq@saccounty.net

Michael Meaney

Project/Design Engineer, (916) 874-1321
E-mail: meaneym@saccounty.net

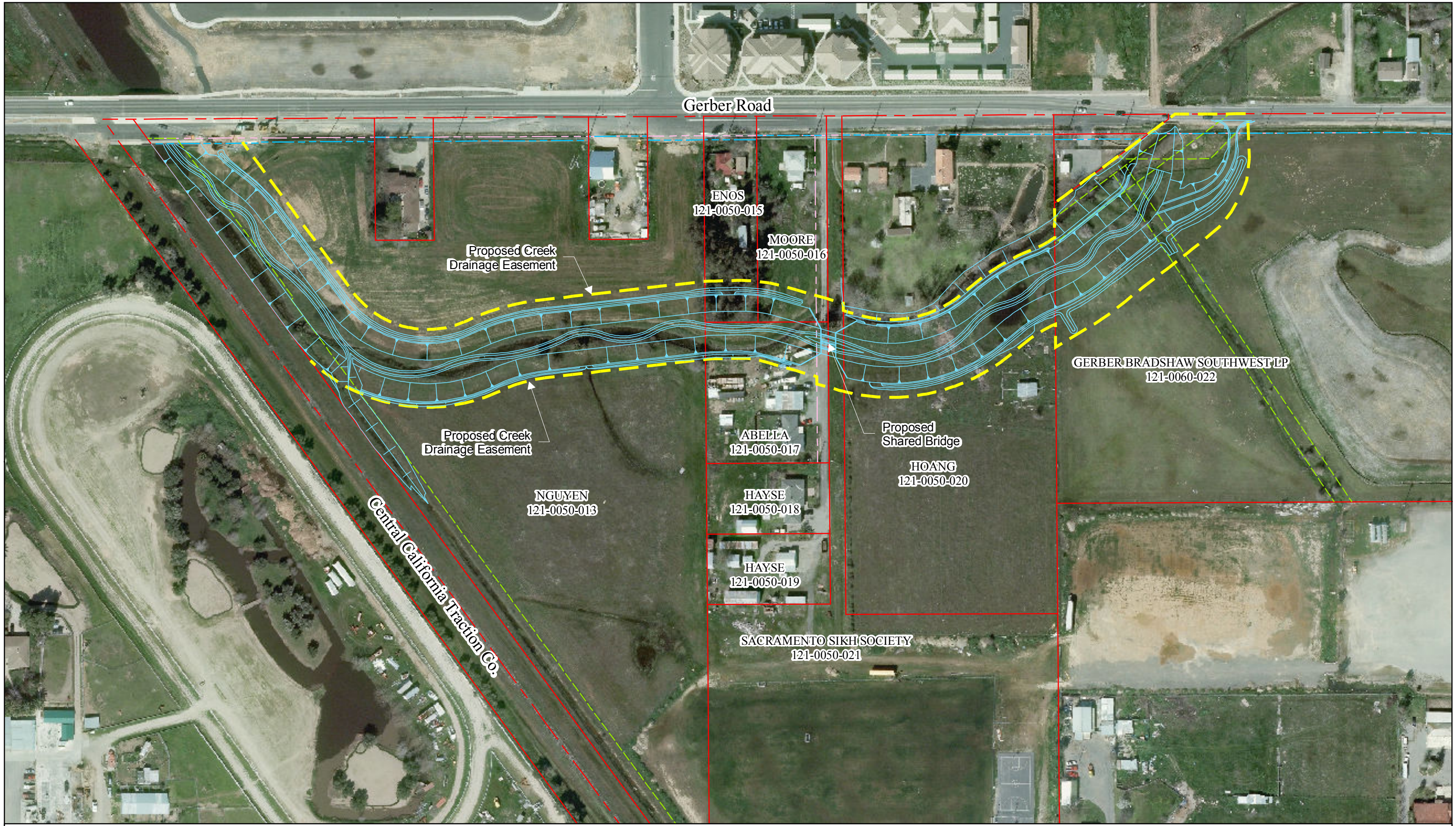
Rohit Vasishta

Assistant Engineer, (916) 874-8393
E-mail: vasishtar@saccounty.net

Joel Zeni, Suulutaaq, Inc.

Project Manager, (541) 510-0505
E-mail: joel.zeni@suulutaaq.com

Document Path: P:\Shared Folders\Drain Design\PROJECTS\Gerber Creek Phase 3\Drawings\06 - C\IS\Board Exhibits\Advertise\ATT 2-Exh A - Proposed Creek Alignment.mxd









-  Surveved Drainage Easement
-  Surveved Property Line
-  Surveved Road ROW
-  Surveved Access Easement

Exhibit A - Gerber Creek Phase 3 Alignment

-  Proposed Creek
-  Drainage Easement



1 inch = 150 feet